

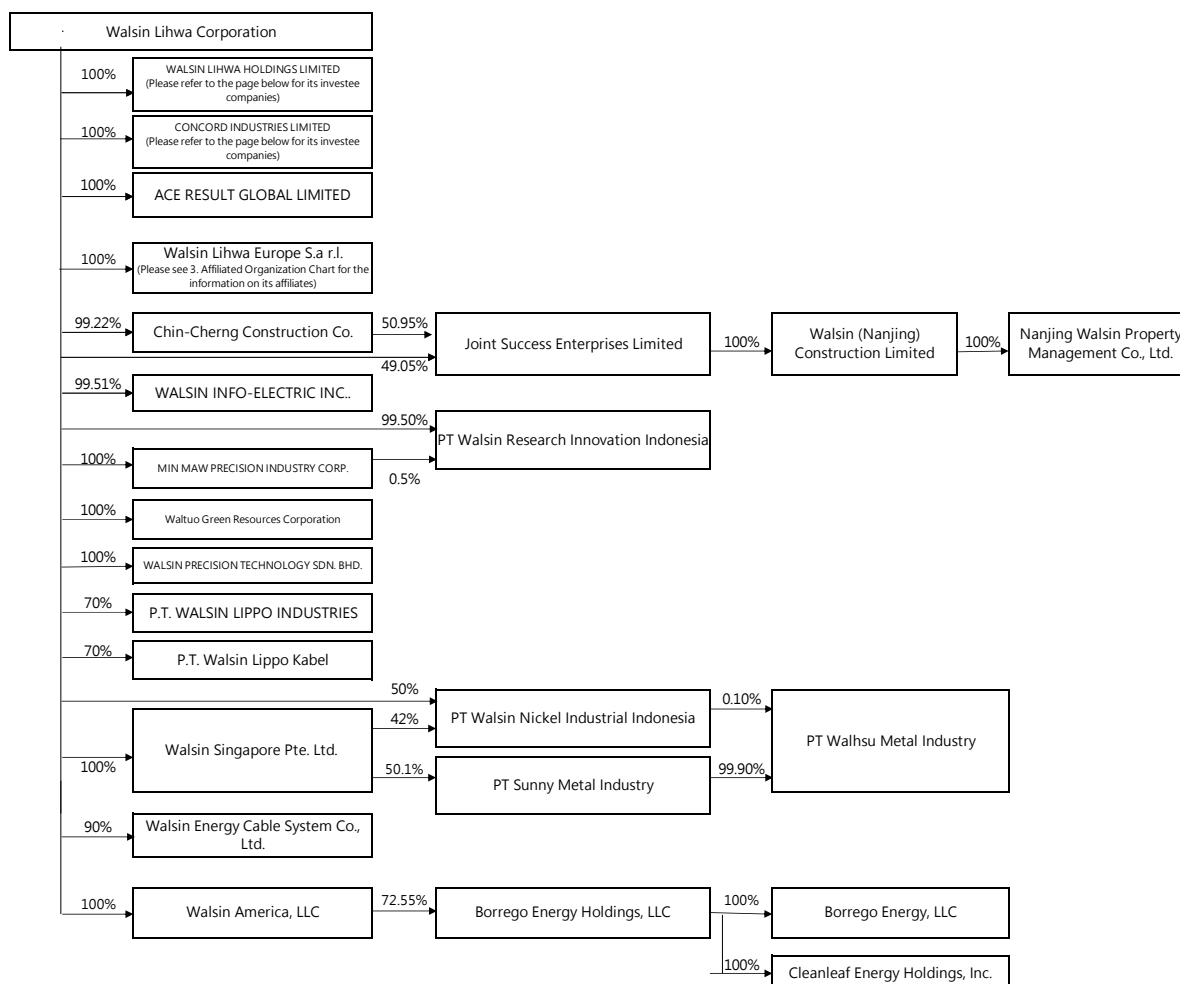


VIII Special Disclosures

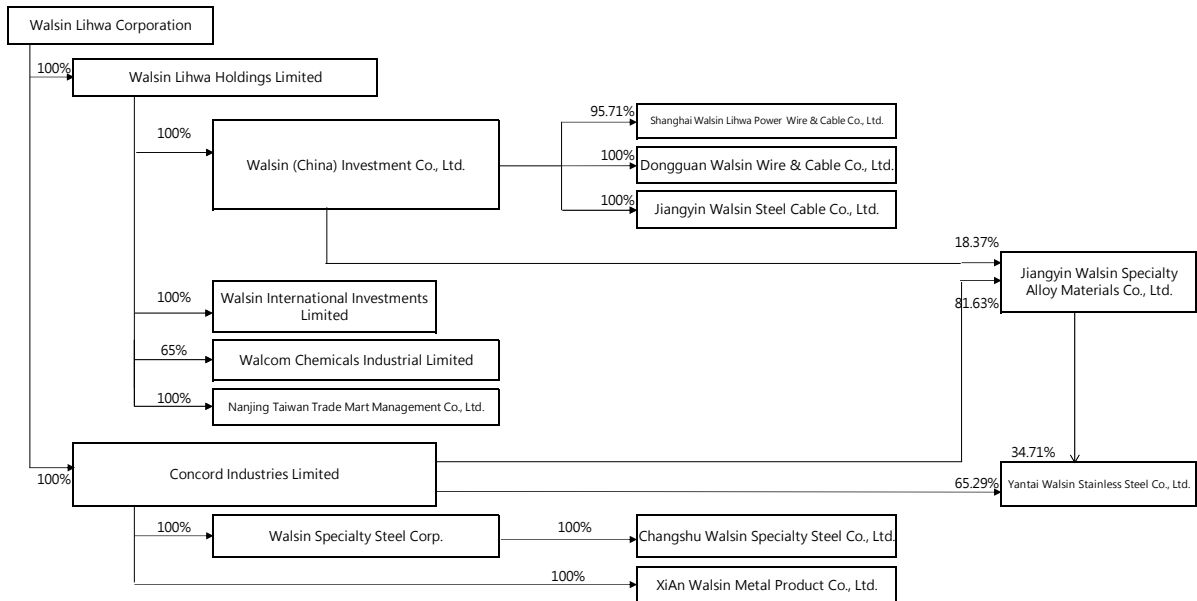
1. Summary of Affiliates Companies

(1) Affiliates

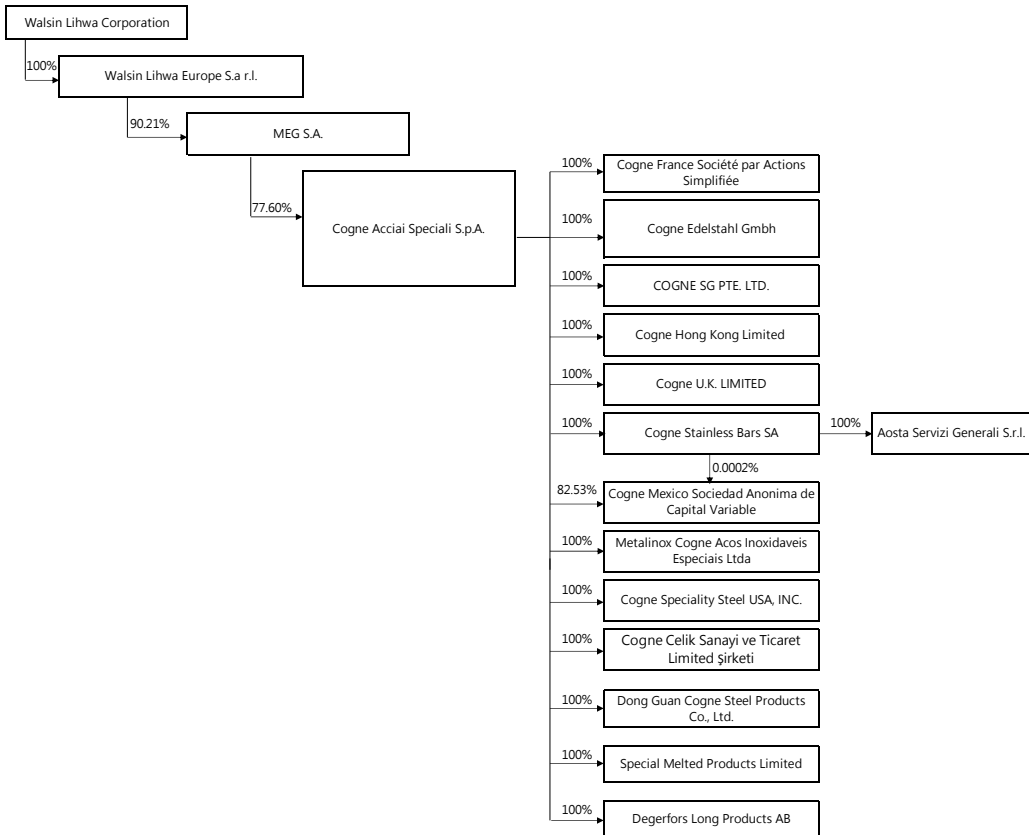
1. Affiliated Organization Chart of Walsin Lihwa Corporation (as of 2023/12/31)



2. Affiliated Organization Chart of Walsin Lihwa Holdings Limited and Concord Industries Limited (as of 2023/12/31)



3. Affiliated Organization Chart of Walsin Lihwa Corporation (as of 2023/12/31)





(2) Background Information of the Affiliated Companies

Unit: 1,000 NTD/USD/Other foreign currencies

Entity	Date of Incorporation	Address	Paid-in Capital		Main Operation or Business Items
Walsin Lihwa Holdings Limited	1992/07/15	Vistra Corporate Services Centre Wickhams Cay II, Road Town, Tortola, VG1110 British Virgin Islands	USD	2,730,393.00	Investment holding.
Walsin (China) Investment Co., Ltd.	1995/11/02	Rm. 2804, 28th Floor, Shanghai Mart Tower, No. 2299, Yanan Road (West), Shanghai, China	USD	78,600,000.00	Investment holding.
Shanghai Walsin Lihwa Power Wire & Cable Co., Ltd.	1995/03/21	No. 1128 Liuxiang Road, Nanxiang Town, Jiading, Shanghai	USD	15,627,056.00	Cables and wires.
Dongguan Walsin Wire & Cable Co., Ltd.	2000/01/26	No. 680, Meijing West Road, Dalang Town, Dongguan, Guangdong	USD	26,000,000.00	Bare copper cables and wires.
Jiangyin Walsin Steel Cable Co., Ltd.	1992/12/16	No. 679 Binjiang Road (West), Binjiang Economic & Technology Development Zone, Jiangyin, Jiangsu	USD	20,000,000.00	Pre-stressed steel wires and steel strands.
Walsin International Investments Limited	1993/12/02	Room 1102, Level 11, Lee Garden One, 33 Hysan Avenue, Causeway Bay, Hong Kong	HKD	3,802,164,817.00	Investments.
Walcom Chemicals Industrial Limited	1988/12/29	Unit 714, 7/F, Miramar Tower, 1-23 Kimberley Road, Tsimshatsui, Kowloon, Hong Kong	HKD	500,000	Commerce.
Nanjing Taiwan Trade Mart Management Co., Ltd.	2010/04/14	No. 230 Hexi street, Nanjing	USD	1,000,000.00	Enterprise management, property management, marketing planning, consultation on various types of advertising information; leasing of market facilities and management of market operations; import and export of electronics, machinery, agricultural and by-products, textiles and handicrafts; commission agency (except auction).
Concord Industries Limited	1992/08/25	Vistra Corporate Services Centre Wickhams Cay II, Road Town, Tortola, VG1110 British Virgin Islands	USD	297,498,375.00	Investment holding.
Walsin Specialty Steel Corp.	1997/08/07	Vistra Corporate Services Centre Wickhams Cay II, Road Town, Tortola, VG1110 British Virgin Islands	USD	82,893,195.00	Investment holding.
Changshu Walsin Specialty Steel Co., Ltd.	1997/12/24	Haiyu Town, Changshu City, Jiangsu Province (Mailing address: No. 2, Hai Yang Road, Haiyu Town, Changshu City, Jiangsu Province)	USD	97,000,000.00	Manufacture and sale of special steel pipes, rods, wires, stainless steel pipes, building and household hardware and heating equipment.
Yantai Huanghai Iron and Steel Co., Ltd.	2007/03/19	No. 2 Wuzhishan Road. ETDZ Yantai City, Shantung Province,	USD	335,065,300.00	It develops and produces new alloy materials, carbon steels, alloy steels, stainless steels, steel billets, various types of steel and iron and steel products and sells its own products; engages in the wholesale business of new alloy materials, carbon steels, alloy steels, stainless steels, steel billets, various types of steel and iron and steel products; engages in the import and export of steel and iron products and related technologies. It also engages in recycling and wholesale of used and waste materials.
Jiangyin Walsin Specialty Alloy Materials Co., Ltd.	2005/03/10	No. 677, Binjiang West Road, Jiangyin City, Jiangsu	USD	49,000,000.00	Cold-rolled stainless steel and flat-rolled products.

Entity	Date of Incorporation	Address	Paid-in Capital		Main Operation or Business Items
XiAn Walsin Metal Product Co., Ltd.	2008/06/20	Room 105, 1 floor, block A, long Qi science and Technology Park, No. 29 Jinye Road, Xi'an new and high tech Zone, Shaanxi	USD	55,350,000.00	Sales of metal products; research and development of metal products; sales of metal materials; manufacturing of metal materials.
Ace Result Global Limited	2014/10/08	Vistra Corporate Services Centre Wickhams Cay II, Road Town, Tortola, VG1110 British Virgin Islands	USD	44,739,988.00	Investment holding.
Walsin Lihwa Europe S.A.R.L.	2022/10/24	16, rue Eugène Ruppert, L- 2453, Luxembourg	EUR	12,000.00	Investment holding.
MEG S.A.	1995/1/27	16, rue Eugène Ruppert, L- 2453, Luxembourg	EUR	91,750.00	Investment holding.
Cogne Acciai Speciali S.p.A.	1991/10/24	VIA PARAVERA 16 AOSTA9AO) CAP 11100	EUR	405,563,167.00	Production, sales and distribution of stainless steel products.
Cogne France Société par Actions Simplifiée	1997/5/26	16 Rue de la Patelle 95613 Cergy Pontoise Cedex BP 80119 - France	EUR	6,068,446.00	Sales and distribution of stainless steel products.
Cogne Edelstahl GmbH	1997/10/16	Carl-Schurz-Str. 2 41460 Neuss - Germany	EUR	3,328,000.00	Sales and distribution of stainless steel products.
COGNE SG PTE. LTD.	2022/7/13	160 Robinson Road, #14-04, SBF Center Singapore - 068914	SGD	139,562.00	Sales and distribution of stainless steel products.
Cogne Hong Kong Limited	2003/12/12	5/F, Manulife Place, 348 Kwun Tong Road, Hong Kong	USD	28,580,000.00	Investment holding.
Cogne U.K. LIMITED	1996/12/31	Uniformity Steel WorksDon Road Newhall Sheffield S92UD	GBP	3,000,000.00	Sales and distribution of stainless steel products.
Cogne Stainless Bars SA	2015/12/21	Via Laveggio 6a 6855 Stabio - Svizzera	CHF	1,000,000.00	Production, sales and distribution of stainless steel products.
Aosta Servizi Generali S.r.l.	2007/4/26	Via Nazionale per Carema 40 - 11026 Pont-Saint-Martin (AO) - Italy	EUR	200,000.00	Electrical and mechanical repair services and general services.
Cogne Mexico Sociedad Anonima de Capital Variable	2014/10/10	Av. Otomies no sin numero int. 1 - CD industrial Xicohtencatl II Huamantla - 90500 Tlaxcala - Mexico	MXN	55,025,139.00	Production, sales and distribution of stainless steel products.
Metalinox Cogne Acos Inoxidaveis Especiais Ltda	1977/7/5	Avenida Presidente Wilsom. 4382 Upiranga - Sao Paulo/SP CEP 04220-001 Brazil	R\$	76,501,990.00	Sales and distribution of stainless steel products.
Cogne Specialty Steel USA, INC.	1995/8/16	277 Fairfield Road _STE 315. Fairfiled, NJ 07004	USD	6,849,800.00	Sales and distribution of stainless steel products.
Cogne Celik Sanayi ve Ticaret Limited Şirketi	2010/5/20	Sultan Orhan Mah Keresteciler San. Sit. 2003ada 1Parsel Gebze Kocaeli Türkiye	TL	23,952,125.00	Sales and distribution of stainless steel products.
DongGuan Cogne Steel Products Co.,Ltd.	2005/1/21	Building 1, No. 27, Weijian Road,industrial park of ChaShan,ChaShan town,DongGuan city,GuangDong province,China	USD	27,200,000.00	Production, sales and distribution of stainless steel products.
Special Melted Products Limited	1985/6/5	President Way Works, President Way, Sheffield, S4 7UR	GBP	4,199,157.00	Production and sales of high quality special steels and nickel-based alloys.
Degerfors Long Products AB	2021/8/24	Bruksparken 2, 693 81 DEGERFORS	SEK	25,000.00	Sales of specialty steel products.
Chin-Cherng Construction Co.	1973/06/28	5th Floor, 192 Jingye 1st Road, Jhongshan District, Taipei 104, Taiwan, R.O.C.	NTD	5,340,994,320.00	Investment in and construction of national housing, sale of commercial buildings, rental design and interior renovation.
Joint Success Enterprises Limited	2004/01/08	Vistra Corporate Services Centre Wickhams Cay II, Road Town, Tortola, VG1110 British Virgin Islands	USD	43,520,000.00	Investment holding.
Walsin (Nanjing) Construction Limited	2005/08/09	No. 236 Jiangdong Road,Jianye District, Nanjing, Jiangsu Province	USD	50,000,000.00	Real estate development, sales, leasing, after-sales service, and property management; hotel and serviced apartments management and consulting, and retail sales and food service management consulting.



Special Disclosures

Entity	Date of Incorporation	Address	Paid-in Capital		Main Operation or Business Items
Nanjing Walsin Property Management Co., Ltd.	2013/01/30	No. 230, Hexi Avenue, Jianye Zone, Nanjing, Jiangsu	RMB	1,000,000.00	Property management, car park management services, corporate marketing planning, management consulting, self-owned house rental, building installation, decoration projects, landscaping design, construction, etc
Walsin Info-Electric Corp.	1995/6/21	25F., No. 1, Songzhi Rd., Xinyi Dist., Taipei City, Taiwan	NTD	300,000,000.00	Solar engineering, mechanical and electrical engineering, and power engineering.
Min Maw Precision Industry Corp.	1980/10/17	25F., No. 1, Songzhi Rd., Xinyi Dist., Taipei City, Taiwan	NTD	348,371,000.00	Assembly of solar panel power systems.
PT Walsin Research Innovation Indonesia	2022/8/23	Gold Coast Office Eiffel Tower Lt. 23 Unit OTA23WF, Jl. Pantai Indah Kapuk, Desa/Kelurahan Kamal Muara, Kec. Penjaringan, Kota Adm. Jakarta Utara, Provinsi DKI Jakarta	USD	1,400,000.00	Other consulting and management.
Waltuo Green Resources Corporation	2018/06/06	No. 47, Bade Rd., Yenshui Dist., Tainan City 737, Taiwan	NTD	18,282,870.00	Waste removal, resource recycling and cement, soil blending and related businesses.
Walsin Precision Technology Sdn. Bhd.	2000/03/15	2115-1,Kawasan Perindustrian air Keroh, Fasa IV, Air Keroh, 75450 Melaka, Malaysia	USD	8,470,000.00	Stainless steel calendered sheets.
P.T Walsin Lippo Industries	1991/04/29	Jl. MH. Thamrin Blok A1-1, Delta Silicon Industrial Park, Lippo Cikarang, Bekasi 17550, Indonesia	USD	15,000,000	Power cables.
P.T. Walsin Lippo Kabel	1997/12/29	Jl. Jati 3 Blok J7/5, Newton Techno Park, Serang, Cikarang Selatan, Bekasi, Jawa Barat 17550	USD	4,285,000	Power cables.
Walsin Singapore Pte. Ltd.	2019/12/3	727 Clementi West Street 2 #01-280 Singapore (120727)	USD	733,000,000	Investment holding and wholesale of metals and metal ores (e.g. steel pipes).
PT Walsin Nickel Industrial Indonesia	2019/12/19	Gedung IMIP, Jalan Batu Mulia 8, RT. 007 RW. 007, Meruya Utara Kembangan, Kota Adm. Jakarta Barat DKI Jakarta 11620, Indonesia	USD	100,000,000	Non-ferrous base metal (nickel pig iron) manufacturing and power plant.
PT Sunny Metal Industry	2021/8/13	Sopo Del Office Tower A Lantai 21 Jalan Mega Kuningan Barat III Lot 10 1-6 , Kel. Kuningan Timur, Kec. Setiabudi, Kota Adm. Jakarta Selatan,Provinsi DKI Jakarta, Indonesia	USD	100,000,000	Manufacturing and trading of nickel matte.
PT Walhsu Metal Industry	2023/5/22	Sopo Del Office Tower A Lantai 21 Jalan Mega Kuningan Barat III Lot 10 1-6, Desa/Kelurahan Kuningan Timur, Kec. Setiabudi, Kota Adm. Jakarta Selatan, Provinsi DKI Jakarta,	USD	9,500,000	Manufacturing and trading of nickel matte.
Walsin Energy Cable System Co., Ltd.	2023/2/13	25F., No.1, Songzhi Rd., Xinyi Dist., Taipei City 110, Taiwan	NTD	3,000,000,000	Submarine cables.
Walsin America, LLC	2022/7/1	1209 Orange Street, Wilmington, New Castle Country, DE 19801,USA	USD	81,302,107.00	Investment holding.
Borrego Energy Holdings, LLC	2022/4/8	1455 Frazee Rd.#500 San Diego,California 92108	USD	63,208,688.00	Solar EPC and O&M Services
Borrego Energy, LLC	2022/4/8	1455 Frazee Rd.#500 San Diego,California 92108	USD	63,208,688.00	Solar EPC and O&M Services
Cleanleaf Energy Holdings, Inc.	2023/9/14	222 SEVERN AVE SUITE 17 BLDG 7-6 ANNAPOLIS, MD 21403	USD	0	Investment holding.

(3) Presumed to have control and affiliation Common Shareholders Information: Not applicable

(4) The main Industries of affiliated companies:

1. Wire and cable industry
2. Stainless steel industry
3. Business real estate
4. Construction and development of solar power systems
5. Production and sales of non-ferrous metals
6. General investment industry

Above table include the main operation or business items of each affiliated company.

The division of work of affiliated companies:

Each line of business affiliates operate independently, partially some affiliates have the purchases, sales, engineering contracting trading and marketing agency services and other projects with each other.

(5) Directors, Supervisors, and Presidents of the Affiliated Companies (as of 2023/12/31)

Entity	Title	Name of the Representation	No. of Share: Share; 1000 RMB/USD/EUR	
			Shareholding (Contribution) Shares (Contribution)	Shareholding
Walsin Lihwa Holdings Limited	Director	Representative of Walsin Lihwa Corporation: Yu-Lon Chiao, Patricia Chiao, Sophi Pan	2,730,393	100.00%
Walsin (China) Investment Co., Ltd.	Chairman	Jian-Hua Cao	USD 0	0.00%
	General manager	Fred Pan	USD 0	0.00%
	Director	Representative of Walsin Lihwa Holdings Limited: Jian-Hua Cao, C.C. Chen, Fred Pan	USD 78,600	100.00%
	Supervisor	Representative of Walsin Lihwa Holdings Limited: Richard Wu	USD 78,600	100.00%
Shanghai Walsin Lihwa Power Wire & Cable Co., Ltd.	Chairman	Witty Liao	USD 0	0.00%
	Vice Chairman	Chien-Ming Chang	USD 0	0.00%
	General manager	Jen-Chan Huang	USD 0	0.00%
	Director	Representative of Shanghai Nanxiang Development Zone Industrial Co. Ltd. : Chien-Ming Chang, Chi-Ming Chou	USD 671	4.29%
	Director	Representative of Walsin (China) Investment Co., Ltd.: Witty Liao, Jin-Renn Leu, Wei-Chih Hu, Allen Yang, Jen-Chan Huang	USD 14,956	95.71%
	Supervisor	Representative of Walsin (China) Investment Co., Ltd.: Richard Wu	USD 14,956	95.71%
Dongguan Walsin Wire & Cable Co., Ltd.	Chairman	Witty Liao	USD 0	0.00%
	General manager	Chang-Ming Wu	USD 0	0.00%
	Director	Representative of Walsin (China) Investment Co., Ltd.: Witty Liao, Chang-Ming Wu, Kiwi Lan	USD 26,000	100.00%
	Supervisor	Representative of Walsin (China) Investment Co., Ltd.: Richard Wu	USD 26,000	100.00%
Jiangyin Walsin Steel Cable Co., Limited (JHS)	Chairman	Witty Liao	USD 0	0.00%
	Vice Chairman	Lu Lu	USD 0	0.00%
	Director	Representative of Walsin (China) Investment Co., Ltd.: Witty Liao, Chao-Yang Cheng , Sherry Ho	USD 20,000	100.00%
	Supervisor	Representative of Walsin (China) Investment Co., Ltd.: Richard Wu	USD 20,000	100.00%
Walsin International Investments Limited	Director	Representative of Walsin Lihwa Holdings Limited: C.C. Chen, Fred Pan	3,802,164,817	100.00%
	President	Tzu-Yi Chiao	0	0.00%
Walcom Chemicals Industrial Limited	Director	Hao Chi	174,999	35.00%
	Director	Qi-Ying Liang	1	0.00%
	Director	Yong-Taig Chen	0	0.00%



Special Disclosures

Entity	Title	Name of the Representation	Shareholding (Contribution)	
			Shares (Contribution)	Shareholding
Nanjing Taiwan Trade Mart Management Co., Ltd.	Chairman	Min Zhou	USD 0	0.00%
	General manager	Min Zhou	USD 0	0.00%
	Director	Representative of Walsin Lihwa Holdings Limited: Min Zhou, Xue-Wu Wu, Chi-Wei Lan	USD 1,000	100.00%
	Supervisor	Representative of Walsin Lihwa Holdings Limited: Richard Wu	USD 1,000	100.00%
Concord Industries Limited	Director	Representative of Walsin Lihwa Corporation: Yu-Lon Chiao, Patricia Chiao, Sophie Pan	297,498,375	100.00%
Walsin Specialty Steel Corp.	Director	Representative of Walsin Lihwa Corporation: Yu-Lon Chiao, Patricia Chiao, David Wen	82,893,195	100.00%
Changshu Walsin Specialty Steel Co., Ltd.	Chairman	Witty Liao	USD 0	0.00%
	General manager	Hsin-Hung Chen	USD 0	0.00%
	Director	Representative of Walsin Specialty Steel Corp: Witty Liao, Yi-Chung Chen, Pei-Hsuan Li	USD 97,000	100.00%
	Supervisor	Representative of Walsin Specialty Steel Corp: Richard Wu	USD 97,000	100.00%
Yantai Walsin Stainless Steel Co., Ltd.	Chairman	Kevin Niu	USD 0	0.00%
	General manager	Nora Lin	USD 0	0.00%
	Director	Representative of Jiangyin Walsin Specialty Alloy Materials Co., Ltd.: Kevin Niu, Nora Lin	USD 116,312.7	34.71%
	Director	Representative of Concord Industries Limited: Allen Yang	USD 218,752.6	65.29%
	Supervisor	Representative of Jiangyin Walsin Specialty Alloy Materials Co., Ltd.: Richard Wu	USD 116,313	34.71%
Jiangyin Walsin Specialty Alloy Materials Co., Ltd.	Chairman	Chao-Yang Cheng	USD 0	0.00%
	General manager	Lu Lu	USD 0	0.00%
	Director	Representatives of Concord Industries Limited/ Walsin (China) Investment Co., Ltd.: Chao-Yang Cheng, Witty Liao, Sherry Ho	USD 49,000	100.00%
	Supervisor	Representative of Concord Industries Limited/ Walsin (China) Investment Co., Ltd.: Richard Wu	USD 49,000	100.00%
XiAn Walsin Metal Product Co., Ltd.	Executive Director	Representative of Concord Industries Limited: Allen Yang	USD 55,350	100.00%
	Supervisor	Representative of Concord Industries Limited: Sophi Pan	USD 55,350	100.00%
Ace Result Global Limited	Director	Representative of Walsin Lihwa Corporation: David Wen, Sophi Pan	44,739,988	100.00%
Chin-Cherng Construction Co.	Chin-Cherng Construction Co.	Wu-Shung Hong	403,620	0.08%
	General manager	Fred Pan	0	0.00%
	Director	Representative of Walsin Lihwa Corporation: Yu-Cheng Chiao, Yu-Lon Chiao, Fred Pan, David Wen	529,955,805	99.22%
	Supervisor	Richard Wu	0	0.00%
Joint Success Enterprises Limited	Director	Representative of Chin-Cherng Construction Co.: Fred Pan, Sophi Pan, Patricia Chiao	22,175,438	50.95%
Walsin (Nanjing) Construction Limited	Chairman	Jian-Hua Cao	USD 0	0.00%
	Vice Chairman	Fred Pan	USD 0	0.00%
	President	Wei-Hsiung Wang	USD 0	0.00%
	Director	Representative of Joint Success Enterprises Limited: Jian-Hua Cao, Yu-Lon Chiao, Fred Pan	USD 50,000	100.00%
	Supervisor	Representative of Joint Success Enterprises Limited: Richard Wu	USD 50,000	100.00%
Nanjing Walsin Property Management Co., Ltd.	Nanjing Walsin Property Management Co., Ltd.	Tzu-Yi Chiao	RMB 0	0.00%
	General manager	Lin Chen	RMB 0	0.00%
	Director	Representative of Walsin (Nanjing) Construction Limited: Tzu-Yi Chiao, Fred Pan, Kiwi Lan	RMB 1,000	100.00%

Entity	Title	Name of the Representation	Shareholding (Contribution)	
			Shares (Contribution)	Shareholding
	Supervisor	Representative of Walsin (Nanjing) Construction Limited: Richard Wu	RMB 1,000	100.00%
Walsin Info-Electric Corp.	Chairman	David Wen	0	0.00%
	General manager	David Wen	0	0.00%
	Director	Representative of Walsin Lihwa Corporation: David Wen, C.C. Chen, Sherry Ho	9,491,461	98.87%
	Supervisor	Richard Wu	0	0.00%
Min Maw Precision Industry Corp.	Chairman	David Wen	0	0.00%
	General manager	David Wen	0	0.00%
	Director	Representative of Walsin Lihwa Corporation: David Wen, Sophi Pan, Allen Yang	34,837,100	100.00%
	Supervisor	Representative of Walsin Lihwa Corporation: Richard Wu	34,837,100	100.00%
PT Walsin Research Innovation Indonesia	Chairman	Sherry Ho	0	00.00%
	Director	Representative of Walsin Lihwa Corporation: Sherry Ho, Tsun-Cheng Lin, Ardinand Roynald P	13,930	99.50%
	Supervisor	Representative of Walsin Lihwa Corporation: Richard Wu	13,930	99.50%
Waltuo Green Resources Corporation	Chairman	David Wen	0	0.00%
	General manager	Kuo-Hui Chen	0	0.00%
	Director	Representative of Walsin Lihwa Corporation: David Wen, Kuo-Hui Chen, Allen Yang	1,828,287	100.00%
	Supervisor	Representative of Walsin Lihwa Corporation: Richard Wu	1,828,287	100.00%
Walsin Precision Technology Sdn. Bhd	Chairman	Juei-Lung Chen	0	0.00%
	General manager	Pang Boon Wah	0	0.00%
	Director	Representatives of Walsin Lihwa Corporation: Juei-Lung Chen, Pang Boon Wah, Josh Chia, Goh Lay Hong	32,178,385	100.00%
P.T. Walsin Lippo Industries	President Commissioner	Representative of P.T. Multi Prima Sejahtera, Tbk.: Agus Arismunandar	4,500	30.00%
	Vice President Commissioner	Representative of Walsin Lihwa Corporation: Yu-Lon Chiao	10,500	70.00%
	President Director	Representative of Walsin Lihwa Corporation: Wei-Chih Hu	10,500	70.00%
	Vice President Director	Representative of P.T. Multi Prima Sejahtera, Tbk.: Herry Senjaya	4,500	30.00%
	Director	Representative of Walsin Lihwa Corporation: Sophi Pan, David Karman, Ardinand Roynald P, Andre Kelsen, Foe	10,500	70.00%
P.T. Walsin Lippo Kabel	President Commissioner	Representative of PT. MULTI USAHA WISESA: Agus Arismunandar	1,285,500	30.00%
	Vice President Commissioner	Representative of Walsin Lihwa Corporation: Yu-Lon Chiao	2,999,500	70.00%
	President Director	Representative of Walsin Lihwa Corporation: Wei-Chih Hu	2,999,500	70.00%
	Vice President Director	Representative of PT. MULTI USAHA WISESA: Herry Senjaya	1,285,500	30.00%
	Director	Representative of Walsin Lihwa Corporation: Sophi Pan, David Karman, Ardinand Roynald P, Andre Kelsen, Foe	2,999,500	70.00%
Walsin Singapore Pte. Ltd.	Director	Representatives of Walsin Lihwa Corporation: C.C. Chen, Chen-Yang Chen, Wei-Hsiung Wang, Josh Chia, SUO SAW WAN	733,000,000	100.00%
PT Walsin Nickel Industrial Indonesia	President Commissioner	Representative of Walsin Lihwa Corporation: Sherry Ho	500,000	50.00%
	Commissioner	Representative of Perlux Investment Pte. Ltd.: Hsiung-Feng Mei	80,000	8.00%
	President Director	Representative of Walsin Lihwa Corporation: Josh Chia	500,000	50.00%
	Director	Representative of Perlux Investment Pte. Ltd.: Chi-Chun Lin	80,000	8.00%
	Director	Representative of Walsin Singapore Pte. Ltd.: Hueiping Lo	420,000	42.00%
	Director	Representative of Walsin Lihwa Corporation: C.C. Chen, Ardinand Roynald P.	500,000	50.00%



Special Disclosures

Entity	Title	Name of the Representation	Shareholding (Contribution)	
			Shares (Contribution)	Shareholding
PT Sunny Metal Industry	Chairman	Walsin Singapore Pte. Ltd. Representative: Josh Chia	50,100	50.10%
	Director	Walsin Singapore Pte. Ltd. Representative: C.C. Chen, Sherry Ho	50,100	50.10%
	Director	Berg Holding Limited Representative: Xiang Binghe, Ye Changqing	49,900	49.90%
	Supervising Officer	Berg Holding Limited Representative: Chi-Chun Lin	49,900	49.90%
	Supervisor	Walsin Singapore Pte. Ltd. Representative: Richard Wu	50,100	50.10%
PT Walsu Metal Industry	Chairman	PT Sunny Metal Industry: Josh Chia	9,490,500	99.90%
	Director	PT Sunny Metal Industry: C.C. Chen, Sherry Ho	9,490,500	99.90%
	Director	PT Sunny Metal Industry: Xiang Binghe, Ye Changqing	9,490,500	99.90%
	Supervising Officer	PT Sunny Metal Industry: Chi-Chun Lin	9,490,500	99.90%
	Supervisor	PT Sunny Metal Industry: Richard Wu	9,490,500	99.90%
Walsin Lihwa Europe S.a r.l.	Director	Walsin Lihwa Corporation Representative: C.C. Chen, Sherry Ho, Hueiping Lo	12,000	100.00%
MEG S.A.	Director	Walsin Lihwa Europe S.a r.l. Representative: Sherry Ho, Wei-Hsiung Wang	8,277	90.21%
	Director	Eugenio Marzorati	470	5.12%
Cogne Acciai Speciali S.p.A.	Director	MEG S.A. Representative: Yu-Lon Chiao, Kevin Niu, Sherry Ho, Tzu-Chien Chiao, Ono Motoo, Massimiliano Burelli	314,705,934	77.60%
	Director	REM HOLDING S.A. Representative: Eugenio Marzorati, Roberto Marzorati, Monica Pirovano	90,857,233	22.40%
Cogne France Société par Actions Simplifiée	President	HESPEL Davi	0	0.00%
	Supervisor	Monica Pirovano	0	0.00%
Cogne Edelstahl GmbH	CEO	Bernd Grotenburg	0	0.00%
	Director	Bernd Grotenburg , Ralf Schmitz , Roberto Marzorati	0	0.00%
	Supervisor	Eugenio Marzorati, Monica Pirovano, Emilio Giacomazzi	0	0.00%
COGNE SG PTE. LTD.	Director	Sidhu Kamaljit Singh, Monica Pirovano; Giacomazzi Emilio	0	0.00%
Cogne Hong Kong Limited	Director	Monica Pirovano	0	0.00%
Cogne U.K. LIMITED	Director	Eugenio Marzorati, Monica Pirovano, Jonathan Smit	0	0.00%
Cogne Stainless Bars SA	Director	Margherita Marzorati	0	0.00%
Aosta Servizi Generali S.r.l.	President	Francesco Turcato	0	0.00%
	Director	Francesco Turcato,Alessandra Perlo	0	0.00%
Cogne Mexico Sociedad Anonima de Capital Variable	Director	Sergio Ramos Vazquez	500	100.00%
Metalinox Cogne Acos Inoxidaveis Especiais Ltda	Director	Gilberto Sanches Gonzales	0	0.00%
Cogne Specialty Steel USA, INC.	CEO	Jean Paul Betemps	0	0.00%
	President	Giulio Girivetto	0	0.00%
	Director	Monica Pirovano	0	0.00%
Cogne Çelik Sanayi ve Ticaret Limited Şirketi	Director	Monica Pirovano	0	0.00%
DongGuan Cogne Steel Products Co.,Ltd	Chairman	Monica Pirovano	0	0.00%
	President	Monica Pirovano	0	0.00%
	Vice Chairman	Roberto Marzorati	0	0.00%
	Vice President	Roberto Marzorati	0	0.00%
	Director	Emillio Giacomzzi	0	0.00%
	Supervisor	Eugenio Marzorati	0	0.00%
Special Melted Products Limited	Director	Massimiliano Burelli, Monica Pirovano, Andy Richardson, Victoria Brown	0	0.00%
	Supervisor	Steve Hall	0	0.00%

Entity	Title	Name of the Representation	Shareholding (Contribution)	
			Shares (Contribution)	Shareholding
Degerfors Long Products AB	Director	Monica Pirovano, Emilio Giacomazzi, Sherry Ho, Sara Randstroem, Mikael Lija, Ann-Sofie Larsson	0	0.00%
Walsin Energy Cable System Co., Ltd.	Chairman	Yu-Lon Chiao	0	0.00%
	Director	Representative of Walsin Lihwa Corporation: Yu-Lon Chiao, Sherry Ho, Wei-Hsiung Wang, Jin-Renn Leu	270,000,000	90.00%
	Director	Representative of NKT HV Cables AB: Michael Francis Yong Montejo	30,000,000	10.00%
	Supervisor	Huai-Yu Wang	0	0.00%
Walsin America, LLC	Director	Walsin Lihwa Corporation Representative: Hueiping Lo, Tzu-Wei Chiao, Sophie Pan	USD81,652	100.00%
Borrego Energy Holdings, LLC	Director	Walsin America, LLC Representative: Yu-Lon Chiao, Wei-Hsiung Wang, Sophie Pan	USD 1,460	72.55%
	Director	Michael Adam Hall	USD 123	6.09%
	Director	Aaron Stephen Hall	USD 154	7.66%
Borrego Energy, LLC	NA	BE, LLC is member-managed (it does not have directors)	NA	NA
Cleanleaf Energy Holdings, Inc.	Director	Borrego Energy Holdings, LLC : Yi-Fang Wu	100 shares	100.00%
	Director	Andrew Hall	0 shares	0.00%
	Director	Mikael Backman	0 shares	0.00%

(6) Operating Condition of the Affiliated Companies

Unit: NT\$ thousands

Entity		Capital Stock	Total Assets	Total Liabilities	Net Worth	Sales	Operating Income (loss)	Net Income (loss)	Earnings (Loss) Per Share (NT\$)
Walsin Lihwa Corporation		40,313,329	202,865,082	62,054,767	140,810,315	83,321,352	4,041,947	5,134,316	1.32
Walsin Lihwa Holdings Limited (Note 1)		83,825	23,951,702	3,112,737	20,838,965	10,995,096	-377,222	281,243	N/A
Subsidiaries of Walsin Lihwa Holdings Limited	Walsin (China) Investment Co., Ltd.	2,413,413	20,398,163	16,370,967	4,027,196	35,796	-83,858	-208,895	N/A
	Shanghai Walsin Lihwa Power Wire & Cable Co., Ltd.	479,827	1,638,387	397,364	1,241,023	2,841,247	6,133	36,375	N/A
	Dongguan Walsin Wire & Cable Co., Ltd.	798,330	2,137,048	710,437	1,426,611	6,966,982	-80,388	-34,993	N/A
	Jiangyin Walsin Steel Cable Co., Limited	614,100	1,687,913	959,662	728,251	1,159,827	-184,319	-101,194	N/A
	Walsin International Investments Limited	14,938,706	16,698,486	198,988	16,499,498	0	-30,842	506,162	N/A
	Nanjing Taiwan Trade Mart Management Co., Ltd.	30,705	4,049	522,409	-518,360	1,877	-2,813	-8,336	N/A
	Walcom Chemicals Industrial Limited	1,965	1	68,701	-68,700	0	0	0	N/A
Concord Industries Limited (Note 2)		9,134,676	29,288,465	25,386,632	3,901,833	20,728,108	-945,920	-1,147,159	N/A
Subsidiaries of Concord Industries Limited	Jiangyin Walsin Specialty Alloy Materials Co., Ltd.	1,504,545	3,184,351	2,005,473	1,178,878	2,014,743	14,359	-588,722	N/A
	Walsin Specialty Steel Corp	2,545,230	1,345,602	650	1,344,952	0	-71	272,968	N/A
	Changshu Walsin Specialty Steel Co., Ltd.	2,978,385	3,391,424	2,091,207	1,300,217	4,427,943	374,025	273,984	N/A
	Yantai Walsin Stainless Steel Co., Ltd.	10,288,171	23,387,194	20,782,274	2,604,920	16,525,301	-1,339,805	-1,452,987	N/A
	XiAn Walsin Metal Product Co., Ltd.	1,699,522	819	792,027	-791,208	0	-905	-11,931	N/A
Walsin America, LLC (Note 3)		2,496,378	1,780,176	2,298,073	-517,897	5,037,005	-177,897	-372,662	N/A
Subsidiary of Walsin America, LLC.	Borrego Energy Holdings, LLC	1,940,832	0	524,112	-524,112	0	0	-507,325	N/A
	Borrego Energy, LLC	1,940,832	1,773,961	2,298,073	-524,112	5,037,005	-173,345	-507,325	N/A
	Cleanleaf Energy Holdings, Inc.	0	0	0	0	0	0	0	N/A
Ace Result Limited		1,373,742	2,705,878	0	2,705,878	0	-498	239,169	N/A
P.T Walsin Lippo Kabel		131,571	18,465	1,647	16,818	0	-2,288	-823	(0.67)
Walsin Singapore Pte. Ltd. (Note 4)		22,506,765	44,965,354	10,676,712	34,288,642	31,605,016	1,851,825	1,828,397	N/A
Subsidiary of Walsin	PT Sunny Metal Industry	3,070,500	20,209,877	15,398,865	4,811,012	22,898,502	2,851,152	1,792,975	N/A
	PT Walhsu Metal Industry	291,698	2,786,878	2,494,474	292,404	0	-436	717	N/A



Special Disclosures

Entity		Capital Stock	Total Assets	Total Liabilities	Net Worth	Sales	Operating Income (loss)	Net Income (loss)	Earnings (Loss) Per Share (NT\$)
Singapore Pte. Ltd.	PT Walsin Research Innovation Indonesia	42,987	46,413	9,911	36,502	4,038	-5,718	-5,663	N/A
Walsin Energy Cable System Co., Ltd.		3,000,000	4,554,488	1,601,279	2,953,209	0	-55,486	-45,479	-0.21
Walsin Info-Electric Corp.		300,000	350,133	171	349,962	0	-566	4,645	0.15
P.T. Walsin Lippo Industries		460,575	1,540,961	139,953	1,401,008	986,055	99,070	95,216	N/A
Chin-Cherng Construction Co. (Note 5)		5,340,994	20,078,921	10,393,794	9,685,127	1,309,421	-432,587	-179,331	N/A
Subsidiaries of Chin-Cherng Construction Co.	Joint Success Enterprises Limited	1,336,282	8,579,310	57,711	8,521,599	0	-1,413	-388,159	N/A
	Walsin (Nanjing) Development Limited	1,535,250	18,920,470	10,343,544	8,576,926	1,197,711	-558,534	-547,393	N/A
	Nanjing Walsin Property Management Co., Ltd.	4,335	38,679	60,438	-21,759	160,895	-3,886	-3,961	N/A
Min Maw Precision Industry Corp.		348,371	729,532	316,419	413,113	56,570	37,069	24,677	-4.60
Waltuo Green Resources Corp.		18,283	16,374	7,122	9,252	12,309	-10,532	-8,409	N/A
PT Walsin Nickel Industrial Indonesia		3,070,500	15,675,087	727,401	14,947,685	17,654,006	2,995,395	2,855,856	N/A
Walsin Precision Technology Sdn. Bhd.		260,071	605,089	53,173	551,917	636,456	9,771	13,211	N/A
Walsin Lihwa Europe S.a r.l. (Note 6)		408	34,429,281	19,220,979	15,208,302	27,672,463	200,275	639,873	N/A
Subsidiaries of Walsin Lihwa Europe S.a r.l.	MEG S.A.	3,126	14,215,395	2,159	14,213,236	0	-3,066	906,305	N/A
	Cogne Acciai Speciali S.p.A. (Note 7)	13,781,031	34,476,966	16,094,145	18,382,821	27,672,463	227,664	1,105,020	N/A

Note 1: The assets, liabilities and net income/loss of Walsin Lihwa Holdings Limited include its subsidiaries'.

Note 2: The assets, liabilities and net income/loss of Concord Industries Limited include its subsidiaries'.

Note 3: The assets, liabilities and net income/loss of Walsin America, LLC include its subsidiaries'.

Note 4: The assets, liabilities and net income/loss of Walsin Singapore Pte. Ltd. include its subsidiaries'.

Note 5: The assets, liabilities and net income/loss of Chin-Cherng Construction Co. include its subsidiaries'.

Note 6: The assets, liabilities and net income/loss of Walsin Lihwa Europe S.A.R.L. include its subsidiaries'.

Note 7: The assets, liabilities and net income/loss of Cogne Acciai Speciali S.p.A. include its subsidiaries'.

Note 8: The currency exchange rates were as follows:

2023/12/31 US\$/NT\$=1: 30.705 (exchange rate for profit/loss entries: US\$/NT\$ =1:31.154)

2023/12/31 RMB/NT\$=1: 4.33524 (exchange rate for profit/loss entries: RMB/NT\$=1:4.41546)

2023/12/31 EUR/NT\$=1: 33.98 (exchange rate for profit/loss entries: RMB/NT\$=1:33.69722)

2023/12/31 HKD/NT\$=1:3.929

- Progress of private placement of securities during the latest year and up to the date of annual report publication: None**
- The subsidiaries' shareholding or disposal of the company's shares during the latest year and up to the date of annual report publication: None**
- Other supplemental information: None**
- Corporate events with material impact on shareholders' equity or stock prices set forth in Subparagraph 2, Paragraph 2, Article 36 of the Securities and Exchange Act during the most recent year and up to the annual report publication date: None.**